

# Darkk's Palace Chat Avatar Tutorial

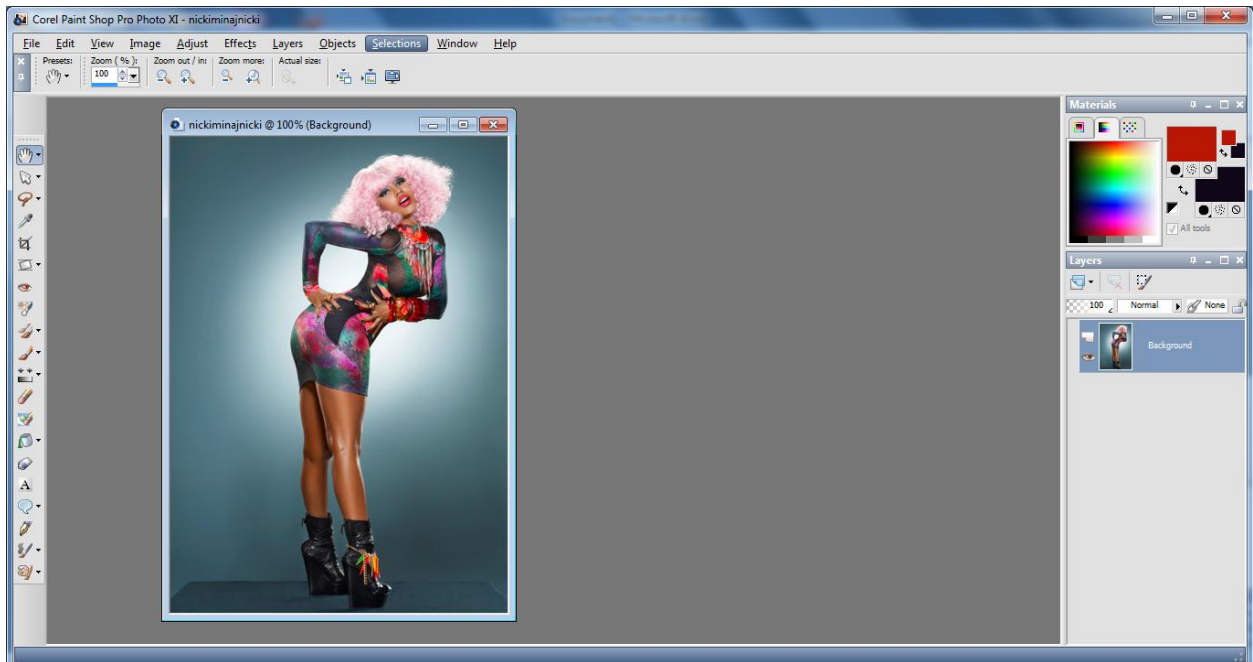
---

This tutorial is for those new to palace or those not so new who want to learn to make their own avatars in Paint Shop Pro. Palace Chat 4 has an excellent new set of avatar editing tools built in, (consult the palace chat 4 documentation for details) but editing the way outlined here has allowed me to make avatars completely without having to use the tools in PChat.

You will need a version of Paint Shop Pro to complete this tutorial, although any image editing program will do as long as the same tools are available. I will be using Paint Shop Pro 11.

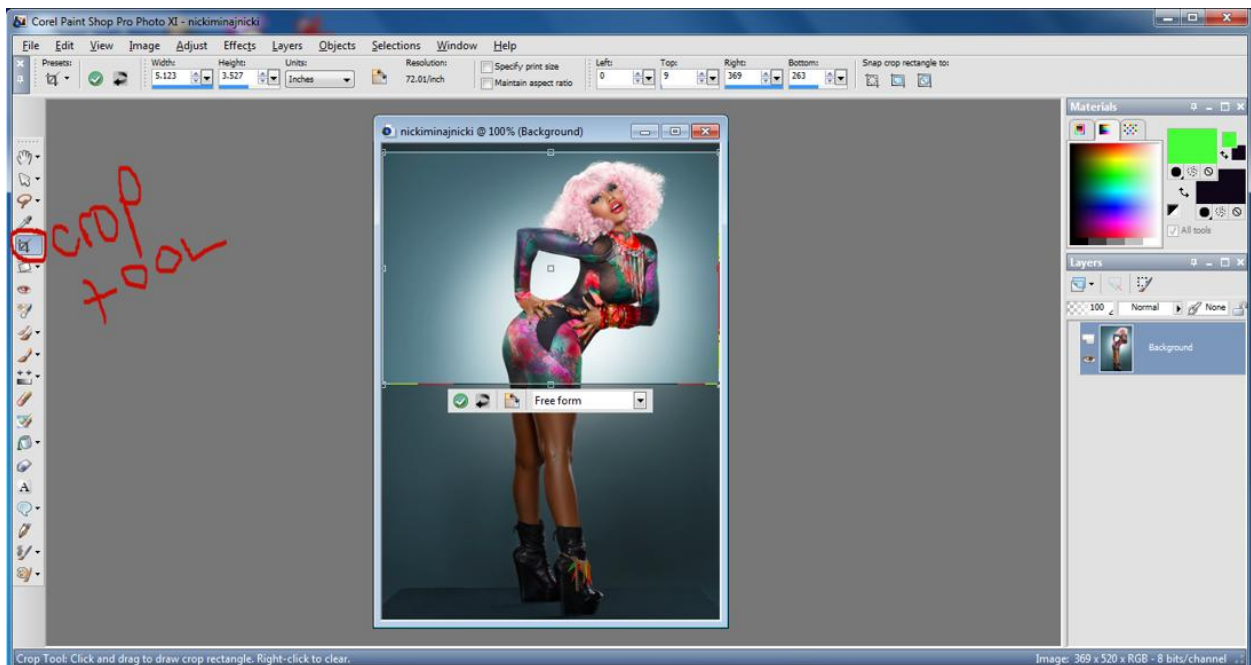
First search the web for a picture you want to use as an avatar in palace, anything you find that interest you will do, or any of your own pictures or artwork.

Once you have found the image you want to use, open it in Paint Shop Pro. Your screen should look similar to the illustration that follows after the image is loaded. For this tutorial, I will be using a photo of Nicki Minaj.

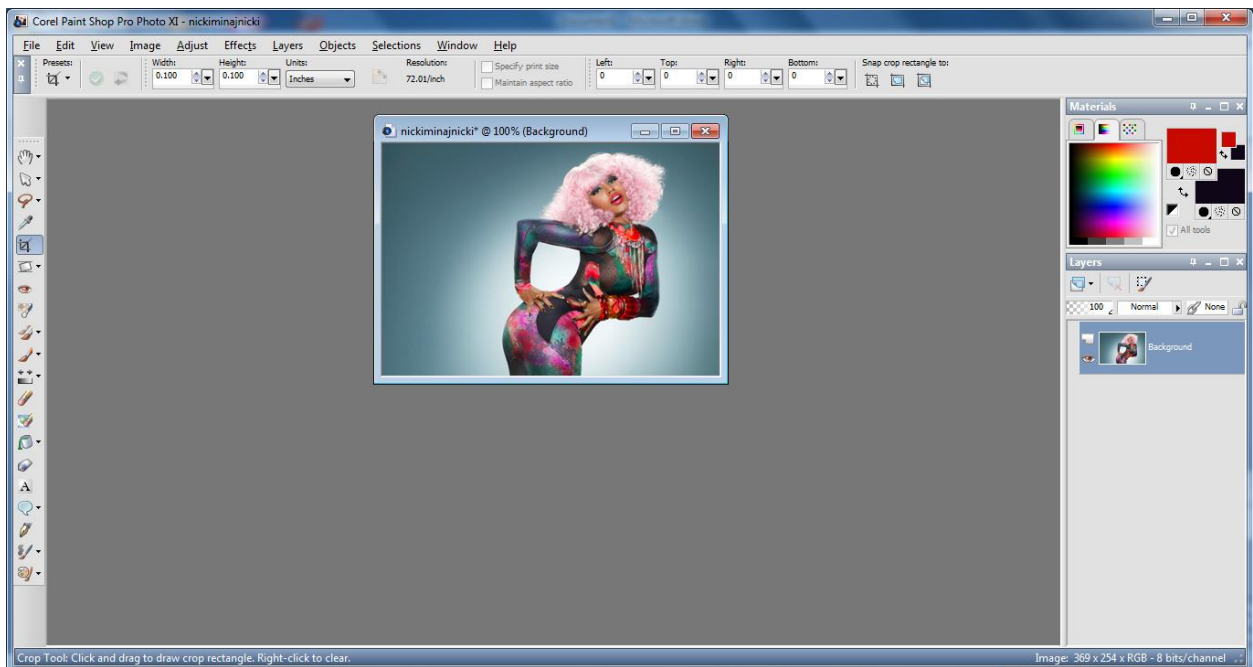


**Two things need to be done first to prepare this image for use as an avatar. First it must be cropped if you only want to use the top portion of the body for your avatar.**

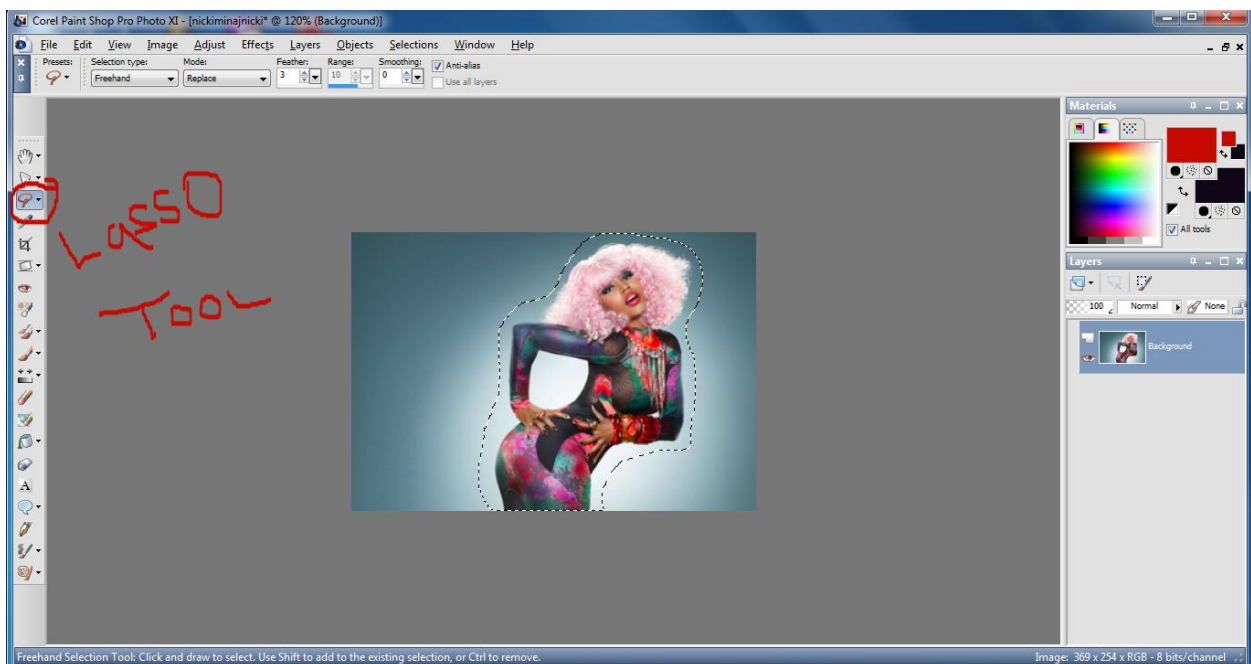
Go to the crop tool as shown in the next example and resize the crop box to remove any areas of the picture you will not be using. The following example shows how your image will look with the crop tool selected and the area that I want to keep for my avatar highlighted by adjusting the crop tool.



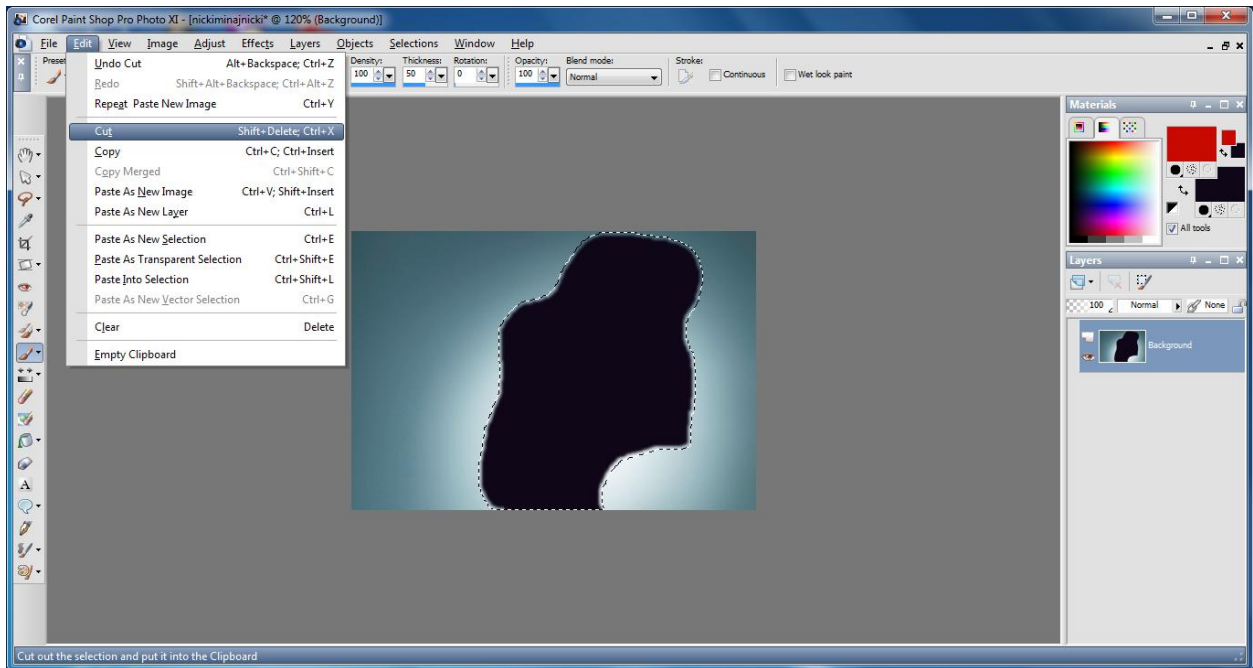
After you have highlighted the area you wish to keep as your avatar, then click the green check mark to crop the image, it is located under the crop rectangle or on the toolbar. After you crop your image it will look similar to the one that follows.



Next to make the close to body editing easier we will remove as much of the background with the lasso tool as possible. Basically, doing this will leave a small area of the background around that body that needs to be removed. Select the lasso tool, or freehand selection, however it is listed and trace around your image as close as possible. Your selection should look similar to the example that follows

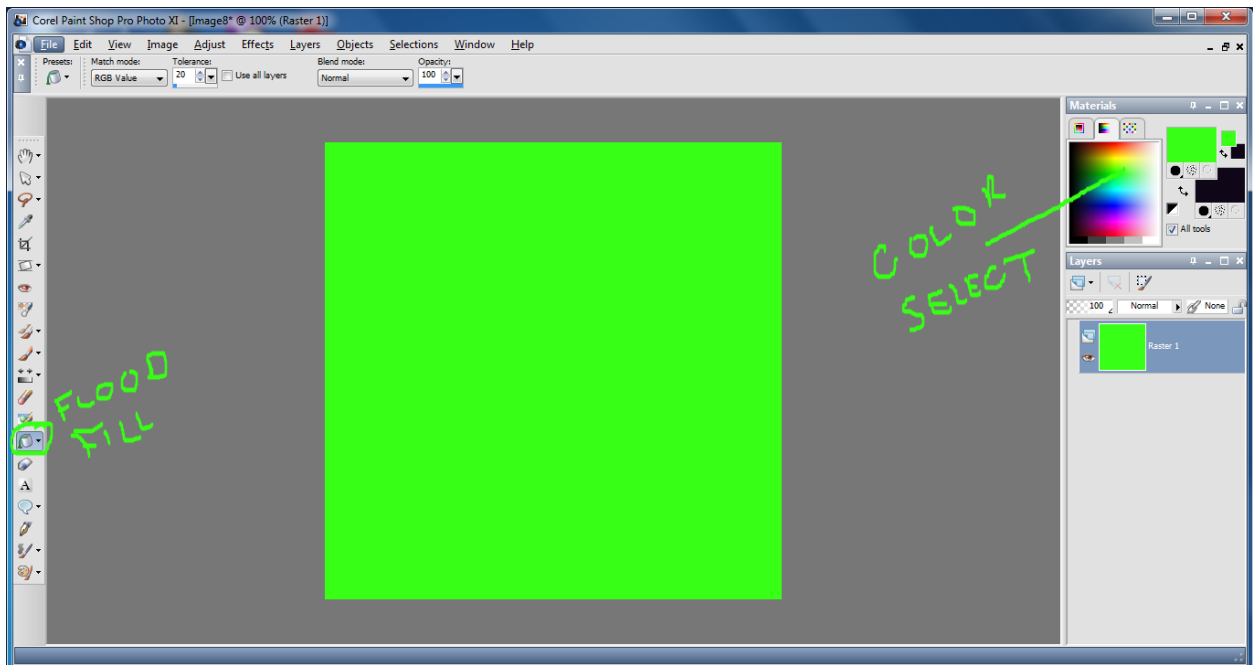


After you have made your selection, go to the edit menu and select cut. Your screen will look similar to the one that follows.

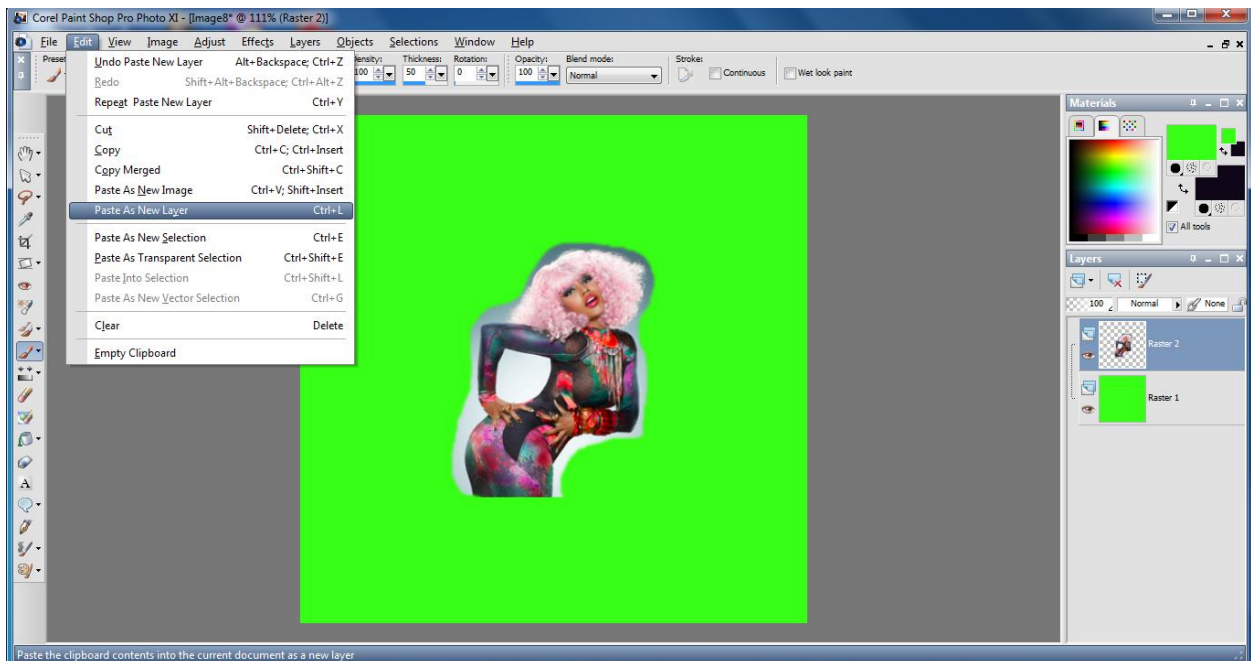


Your selection that you just cut has now been placed on the clipboard for the next step, you can close the window that you just cut from. The next step is not a necessary one, but it makes it easier to edit the background that is left and see any areas you may miss without using this next step.

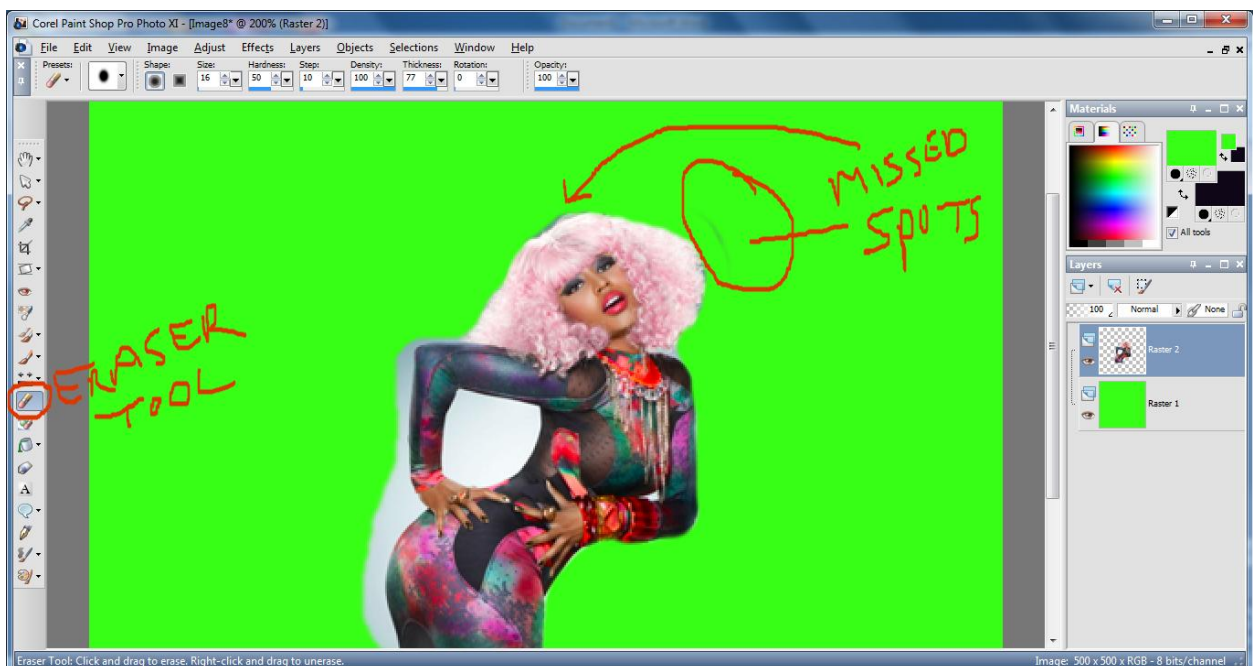
Go to the file menu, select new and create a new image about 500 x 500. After you have done that go to the flood fill tool and color the image you just made neon green. It should look as follows.



Now go back up to the edit menu and select paste as new layer and this puts the picture of your avatar you selected earlier over top of the neon background to make it easy to edit. It will look similar to the example that follows.

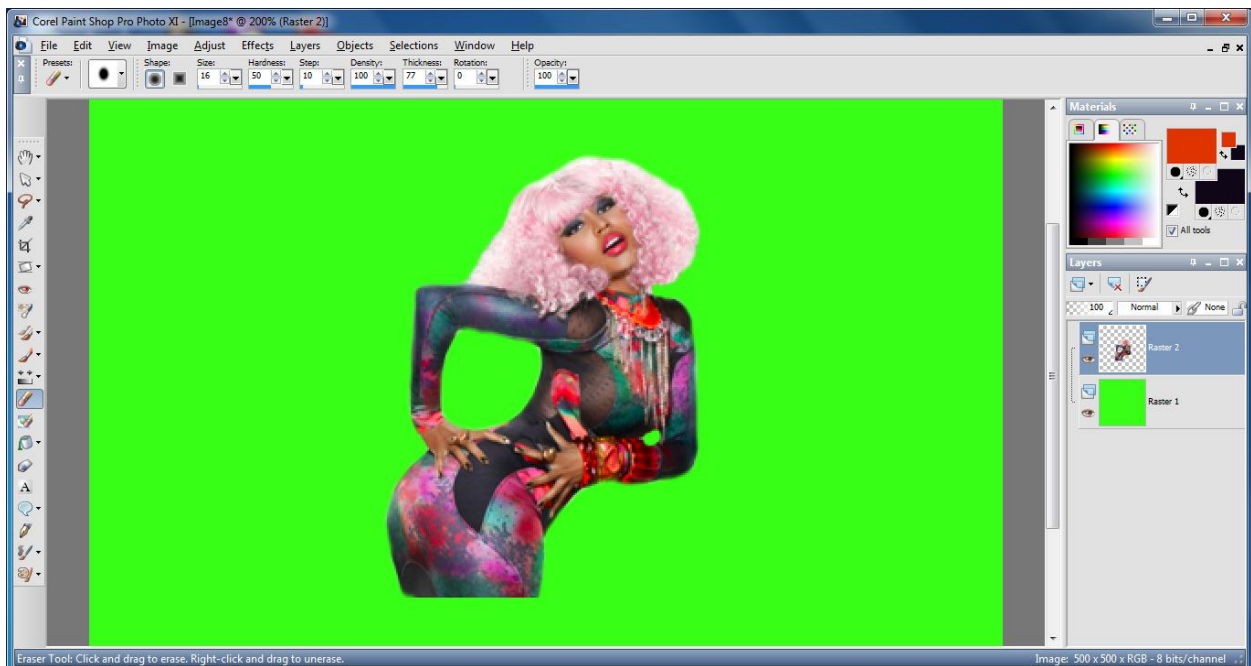


Now you can begin erasing the remainder of the background with the eraser tool. It is sometimes easier to zoom the image to make it bigger for easier editing around the edges of your avatar. You also want to set your eraser size big enough to erase the edges clean and smooth, if it is set too small you will see jagged edges around your avatar. Notice the spots that you can see that were missed by using the neon background while erasing, you can go back and go over these spots again so that they will not show up once you import your avatar into palace. See the example that follows.

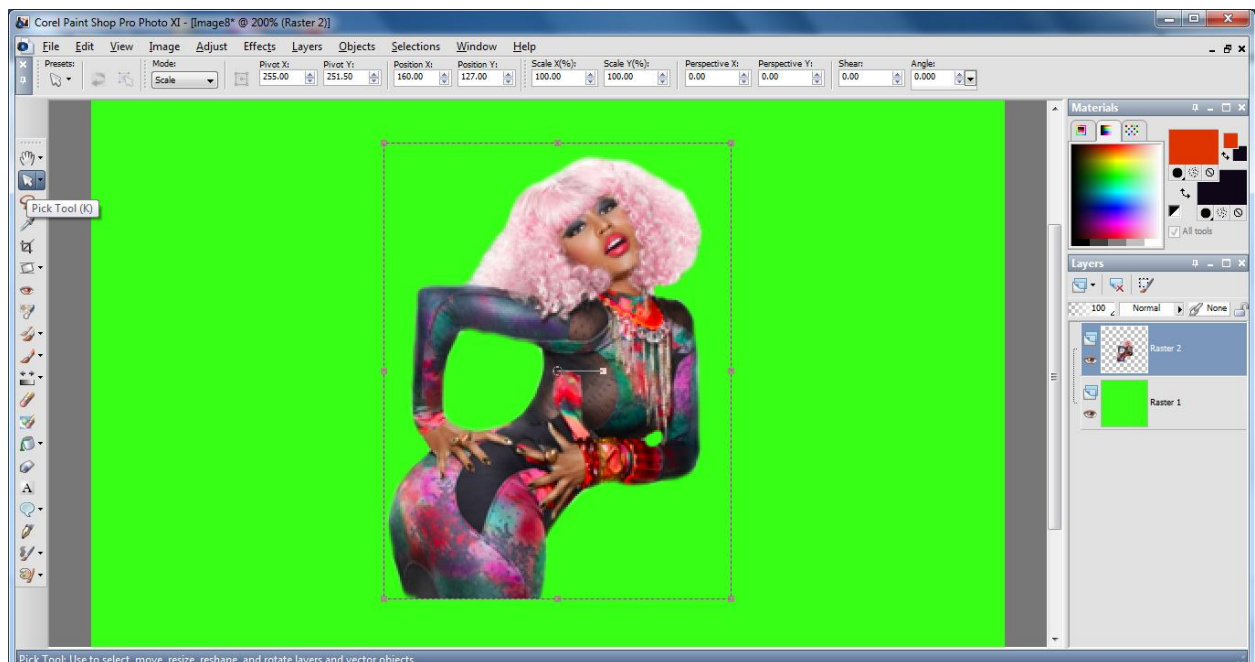


When editing and you get to places like inside the arm or around the face or hair that is pretty complicated and close to get to, just decrease the size of your eraser. You will make mistakes and sometimes take off too much, but that's what the undo feature is for, just go over it again.

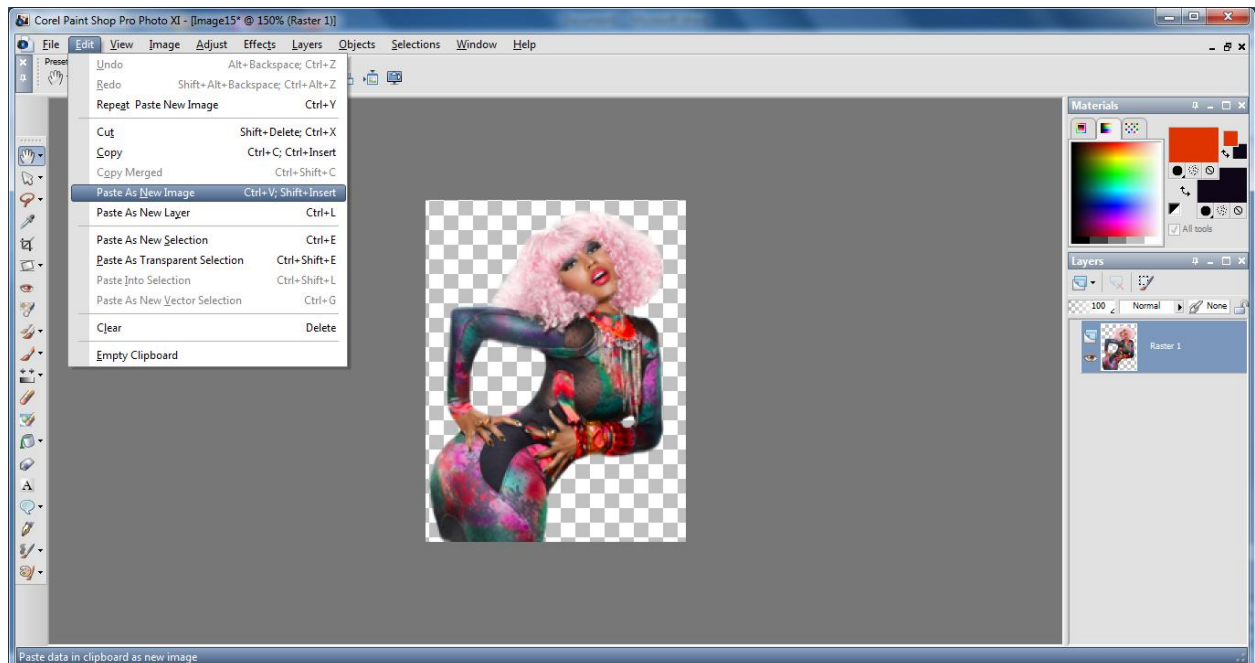
When you have finished erasing as best you can, it should look similar to the example as follows. No missed spots, and the edit is as close to the body as possible without any white spots or highlights that will show in palace, also doing it this way will all but eliminate those jagged edges you see in some avatars.



Now that the editing is done you must prepare the avatar for import into Palace Chat. You will again have to copy your avatar back to the clip board without the neon background. Do this by clicking on the pick tool and a box should surround your avatar, once you see this box go to the edit menu and select copy, your avatar is now on the clipboard again.

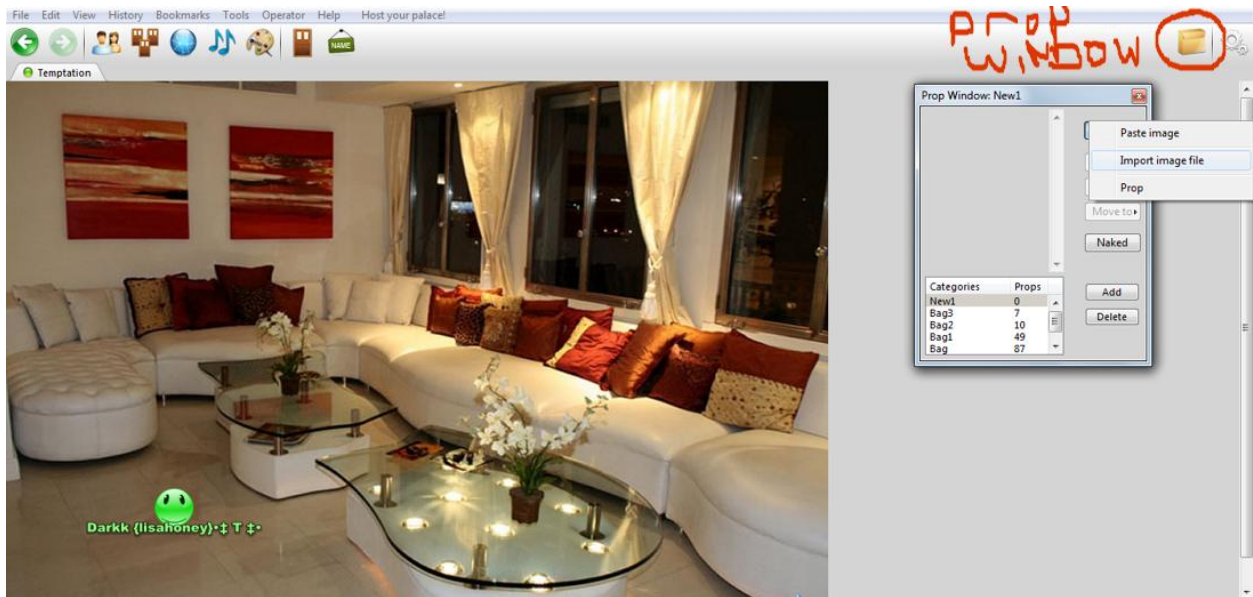


Now go back to the edit menu and select paste as new image and your image will paste back into Paint Shop Pro with no background, except for the checkerboard which shows in PSP as transparent. Example as follows.

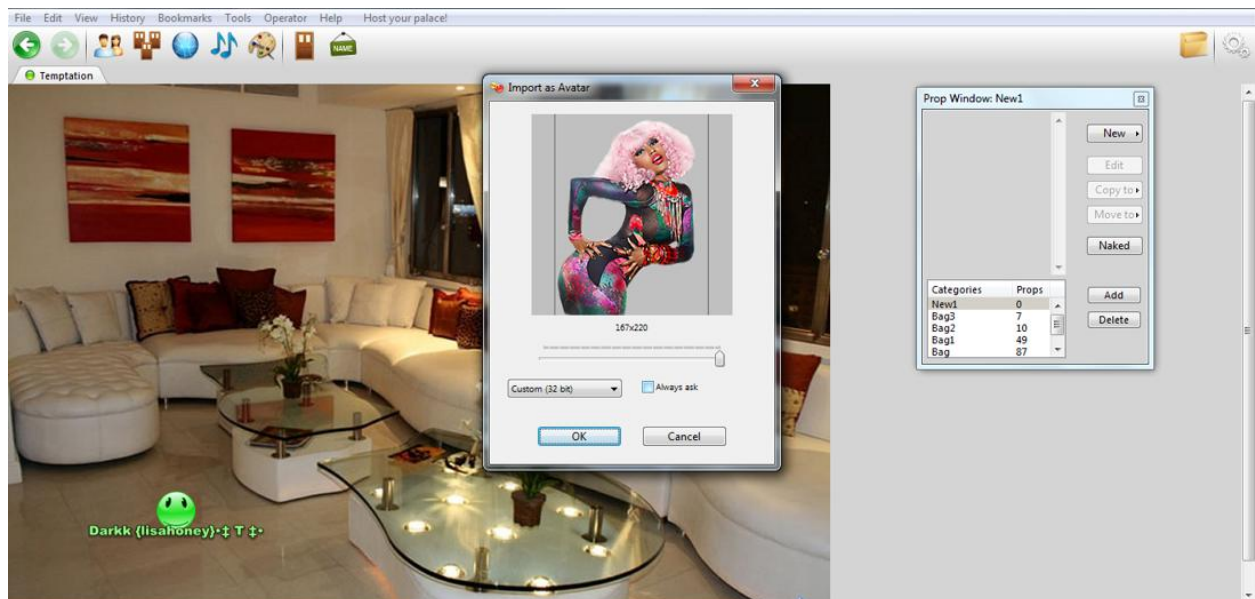


After you have pasted the image back into PSP you may want to make some adjustments to brightness, color, sharpness ect before saving your avatar. After you have done so, go to the file menu and select save as. When the save choices come up be sure to save the pic as a .png (Portable Network Graphics Format). This preserves the transparent background when you import it into Palace Chat. If you save it in jpg or gif format, when you import it you will have a white background to edit out which is not what we want.

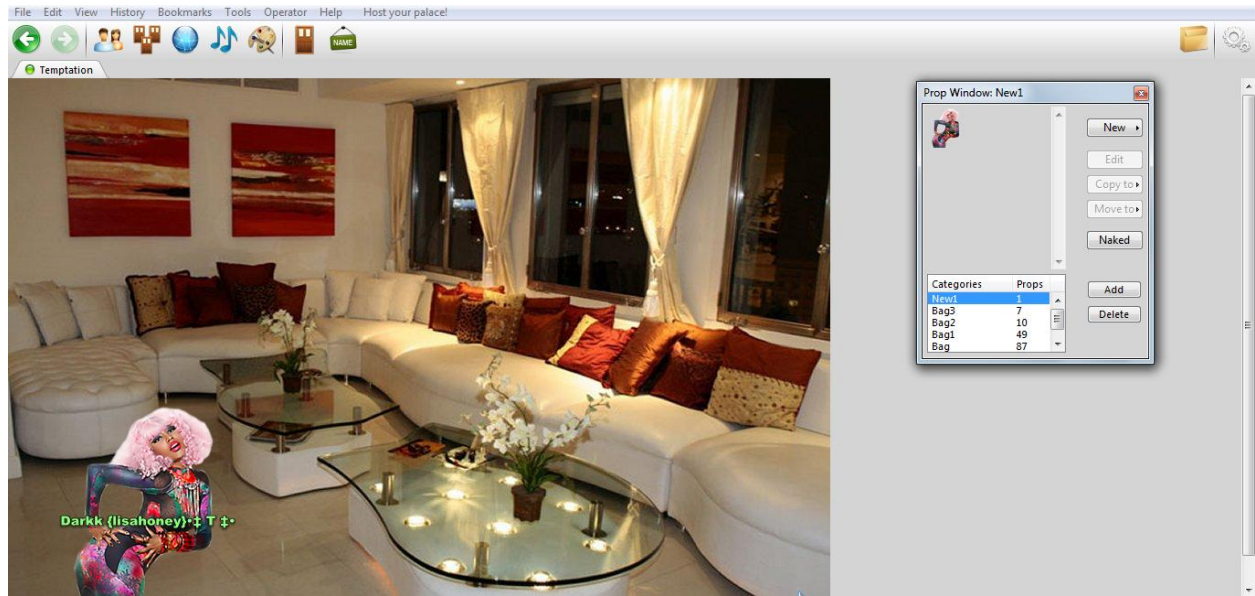
Now to import your avatar into Palace. Open your client and log onto the server of your choice. Once you have logged on open your prop window and click on new and import image file.



The windows file browser box pops up and select the location of the avatar you saved earlier. Click on your saved file and a box pops up in palace showing the avatar you just created along with a slider if you wish to adjust the size of your avatar before importing. This can always be done later if you find your avatar is to big.



After you click ok, your avatar will load and you will see it in the first position of your prop window, double click on it and see your new self made avatar in palace!



I hope this tutorial is helpful to some out there who take the time to go through it. I know everyone does it different ways, but this is my way that I thought would be worth sharing.

Enjoy!!

DARKK